

CATALOG CODE RT-120-XX-XX

TORQUE IN-LBS
20
30
40
50

SHAFT END TYPE
01- FLAG
02- STRAIGHT
03- KNURLED SHAFT END


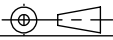
DYNAMIC TORQUE	
NOMINAL TORQUE (IN-LBS)	TOLERANCE
20	±20%
30	±20%
40	±20%
50	±20%

PRODUCT TORQUE SPECIFICATION AT +20°C.

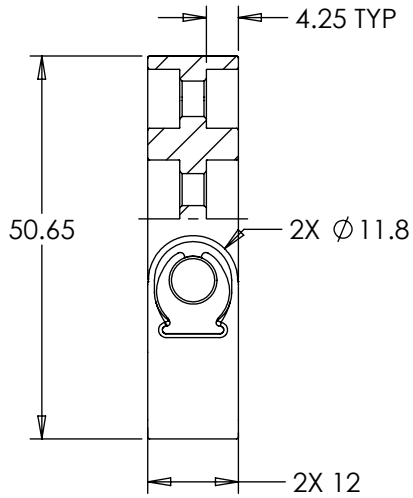
NOTES:

1. USER MUST DETERMINE FITNESS FOR USE IN APPLICATION.
2. ENVIRONMENTAL CONDITIONS: -20° TO +80°C. UP TO 10% OF LIFE CYCLES AT HOT AND COLD CONDITIONS.
3. LIFE: 50,000 CYCLES.
ONE CYCLE CONSISTS OF 90° CW AND 90° CCW AT 10% DUTY CYCLE FOR SPEEDS LESS THAN 100RPM.
- [4] HINGE DESIGNED TO SUPPORT A MINIMAL AXIAL FORCE IN DIRECTION SHOWN, NOT DESIGNED TO SUPPORT AXIAL FORCE IN THE OPPOSITE DIRECTION.
5. MATERIALS:
ZINC DIE CAST HOUSINGS & FLAG SHAFT ENDS
STEEL STRAIGHT SHAFT ENDS
HARDENED STEEL SHAFT
HARDENED STEEL TORQUE CLIPS
MINERAL OIL BASED LUBRICANT
6. FINISH:
NON-COSMETIC PLAIN.
CLEAR CHROMATE RUST PREVENTATIVE COATING ON THE STRAIGHT SHAFT.
7. SHIP ANGLE 0° ± 5° BETWEEN HOUSINGS.
8. DESIGNED TO ACCEPT M4 SCREWS.

SPECIFICATION SUBJECT TO CHANGE

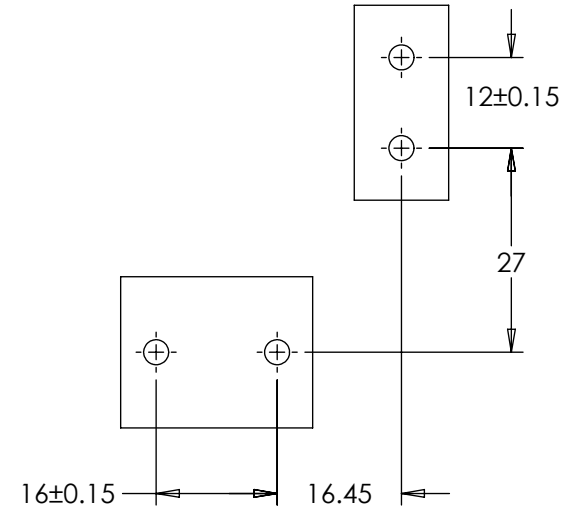
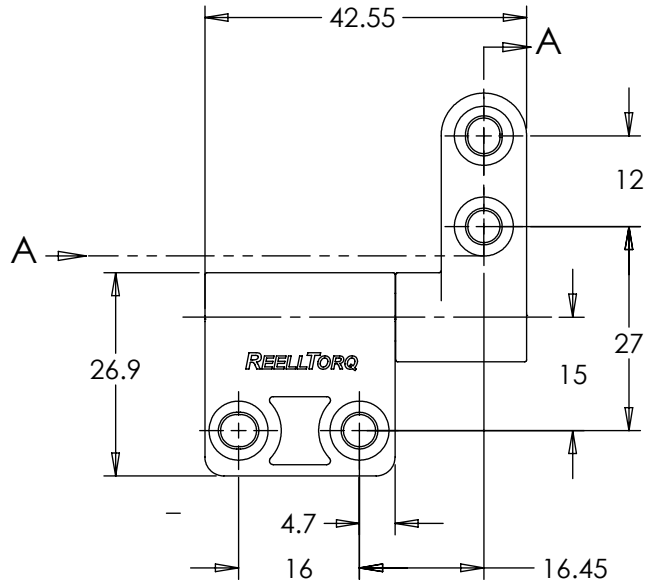
	ECO NO: 04494	PART LIFECYCLE: RELEASED		
	APPROVED BY: BILL WARREN	DEVELOPMENT CYCLE: PRODUCTION		
	APPROVED DATE: 10DEC21	DESCRIPTION: SALES DRAWING		
	PROJECT NO: 0			
REELL PRECISION MANUFACTURING 1259 WILLOW LAKE BOULEVARD SAINT PAUL, MINNESOTA 55110-5103, USA	ENGINEER: BILL WARREN	PART NO: RT-120		
THIS PRINT IS THE CONFIDENTIAL PROPERTY OF REELL PRECISION MFG.	DRAWN BY: DERICK OFFOR			REV: K
INTERPRET PRINT PER ASME Y14.5M-2009	THIRD ANGLE PROJECTION 	DIMENSIONS: mm	SCALE: 1:2 DO NOT SCALE DRAWING	SHEET 1 OF 5

RT - 120 - XX - 01

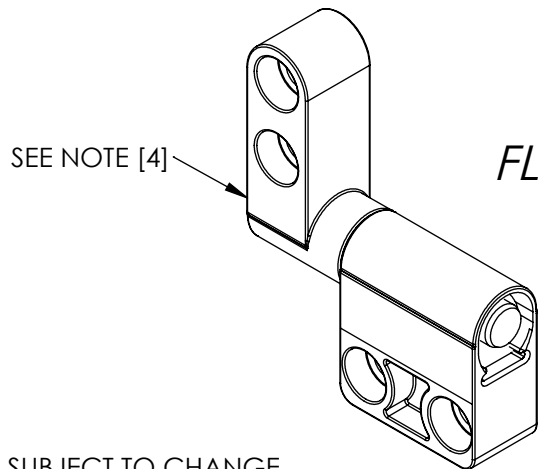


SECTION A-A

APPROXIMATE WEIGHT: 66 GRAMS




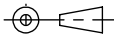
MOUNTING CONFIGURATION



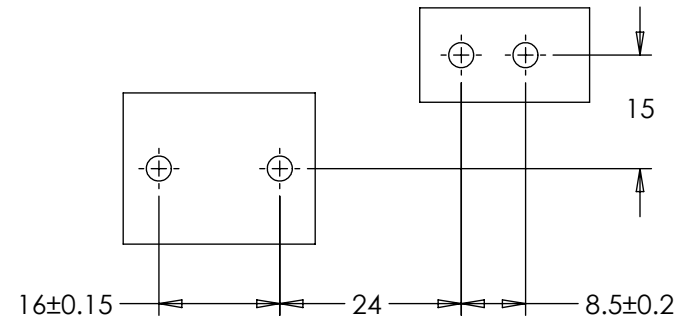
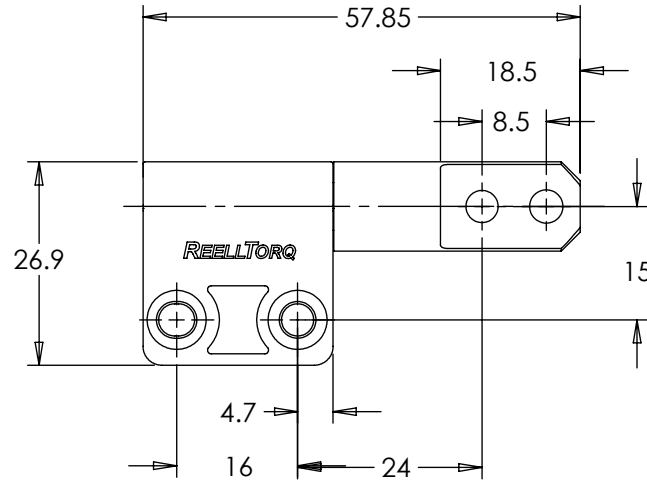
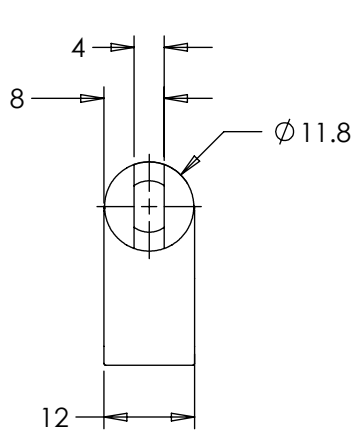
FLAG

ALL DIMENSIONS REFERENCE
SEE CAD MODEL FOR UNSPECIFIED FEATURES.

SPECIFICATION SUBJECT TO CHANGE

 REELL PRECISION MANUFACTURING 1259 WILLOW LAKE BOULEVARD SAINT PAUL, MINNESOTA 55110-5103, USA	ECO NO: 04494	PART LIFECYCLE: RELEASED
	APPROVED BY: BILL WARREN	DEVELOPMENT CYCLE: PRODUCTION
	APPROVED DATE: 10DEC21	DESCRIPTION:
	PROJECT NO: 0	SALES DRAWING
ENGINEER: BILL WARREN	PART NO: RT-120	REV: K
DRAWN BY: DERICK OFFOR	THIRD ANGLE PROJECTION 	SCALE: 1:1
THIS PRINT IS THE CONFIDENTIAL PROPERTY OF REELL PRECISION MFG.	DIMENSIONS: mm	DO NOT SCALE DRAWING
INTERPRET PRINT PER ASME Y14.5M-2009		SHEET 2 OF 5

RT - 120 - XX - 02

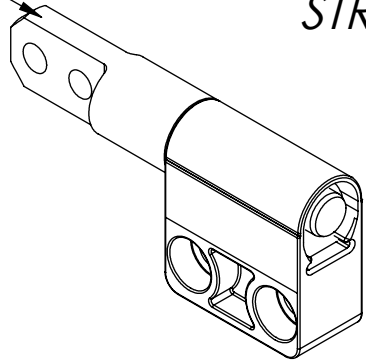


APPROXIMATE WEIGHT: 59 GRAMS

MOUNTING CONFIGURATION

SEE NOTE [4]

STRAIGHT

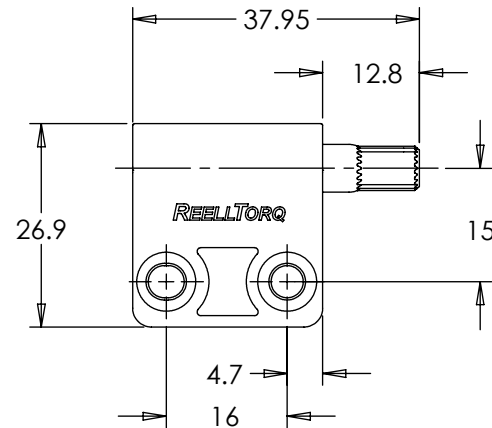
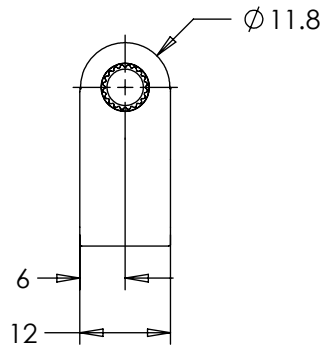


ALL DIMENSIONS REFERENCE
SEE CAD MODEL FOR UNSPECIFIED FEATURES.

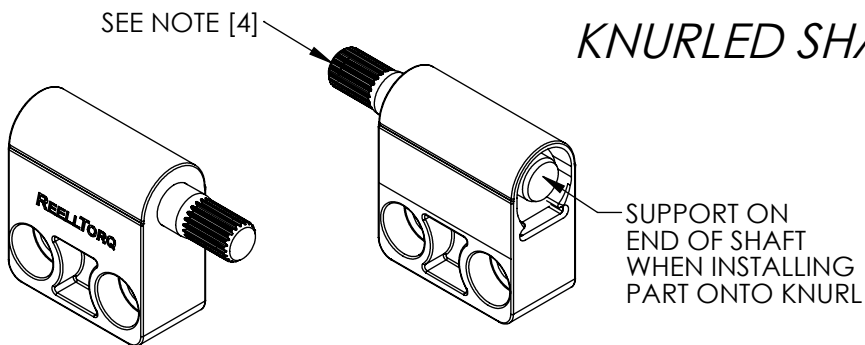
SPECIFICATION SUBJECT TO CHANGE

	ECO NO: 04494	PART LIFECYCLE: RELEASED	
	APPROVED BY: BILL WARREN	DEVELOPMENT CYCLE: PRODUCTION	
	APPROVED DATE: 10DEC21	DESCRIPTION:	
	PROJECT NO: 0	<h2>SALES DRAWING</h2>	
ENGINEER: BILL WARREN			
REELL PRECISION MANUFACTURING 1259 WILLOW LAKE BOULEVARD SAINT PAUL, MINNESOTA 55110-5103, USA	DRAWN BY: DERICK OFFOR	PART NO: RT-120	
THIS PRINT IS THE CONFIDENTIAL PROPERTY OF REELL PRECISION MFG.	THIRD ANGLE PROJECTION 	SCALE: 1:1	REV: K
INTERPRET PRINT PER ASME Y14.5M-2009	DIMENSIONS: mm	DO NOT SCALE DRAWING	SHEET 3 OF 5

RT - 120 - XX - 03




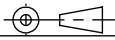
APPROXIMATE WEIGHT: 43 GRAMS



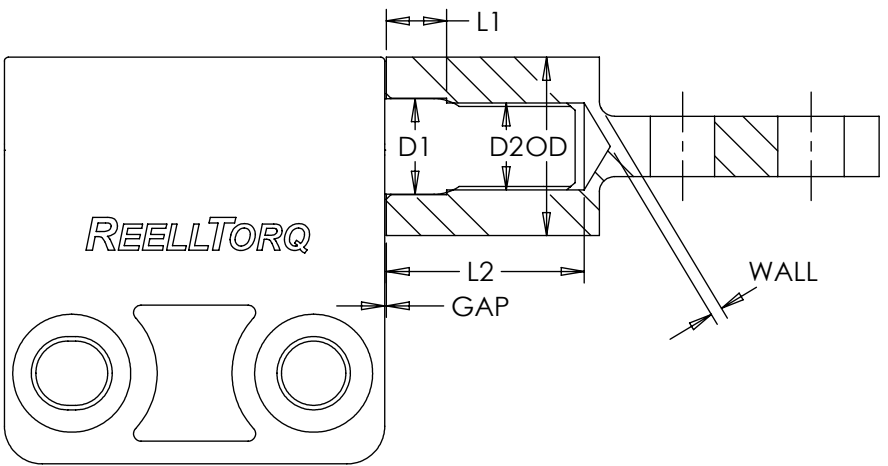
KNURLED SHAFT END

ALL DIMENSIONS REFERENCE
SEE CAD MODEL FOR UNSPECIFIED FEATURES.

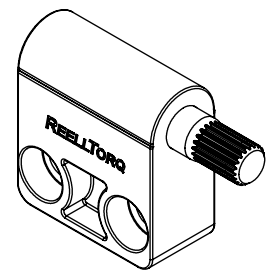
SPECIFICATION SUBJECT TO CHANGE

	ECO NO: 04494	PART LIFECYCLE: RELEASED	
	APPROVED BY: BILL WARREN	DEVELOPMENT CYCLE: PRODUCTION	
	APPROVED DATE: 10DEC21	DESCRIPTION:	
	PROJECT NO: 0	SALES DRAWING	
REELL PRECISION MANUFACTURING 1259 WILLOW LAKE BOULEVARD SAINT PAUL, MINNESOTA 55110-5103, USA	ENGINEER: BILL WARREN	PART NO: RT-120	
THIS PRINT IS THE CONFIDENTIAL PROPERTY OF REELL PRECISION MFG.	DRAWN BY: DERICK OFFOR		
INTERPRET PRINT PER ASME Y14.5M-2009	THIRD ANGLE PROJECTION 	SCALE: 1:1	DO NOT SCALE DRAWING
	DIMENSIONS: mm	SHEET 4 OF 5	

MATERIAL	D1	D2	L1	L2	OD	WALL	GAP
DIE CAST ZINC	6.23±0.03	5.7±0.03	4.5±0.1	13.25 MIN	10 MIN	1 MIN	0.1 NOMINAL
DIE CAST ALUMINUM							
MILD STEEL	6.4±0.05	5.745±0.015					
WROUGHT ALUMINUM							



*RECOMMENDED
MATING GEOMETRY
FOR KNURLED
SHAFT END*



SPECIFICATION SUBJECT TO CHANGE

	ECO NO: 04494	PART LIFECYCLE: RELEASED	
	APPROVED BY: BILL WARREN	DEVELOPMENT CYCLE: PRODUCTION	
	APPROVED DATE: 10DEC21	DESCRIPTION:	
	PROJECT NO: 0	<h1>SALES DRAWING</h1>	
ENGINEER: BILL WARREN			
REELL PRECISION MANUFACTURING 1259 WILLOW LAKE BOULEVARD SAINT PAUL, MINNESOTA 55110-5103, USA	DRAWN BY: DERICK OFFOR	PART NO: RT-120	REV: K
THIS PRINT IS THE CONFIDENTIAL PROPERTY OF REELL PRECISION MFG.	THIRD ANGLE PROJECTION 	SCALE: 1:2	DO NOT SCALE DRAWING
INTERPRET PRINT PER ASME Y14.5M-2009	DIMENSIONS: mm		SHEET 5 OF 5